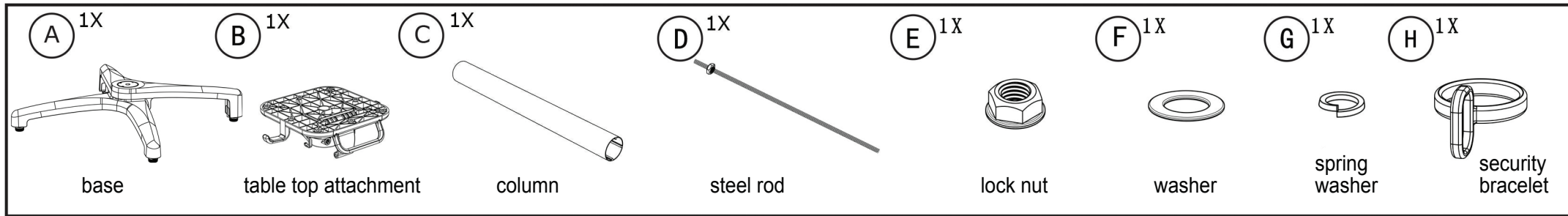


# Assembly Instructions for Alec Folding Table Base



Supplied by Chairforce.com.au



Before assembly please check you have all parts listed below. Please assemble on a clean and flat surface, such as carpet or cardboard to prevent scratches.

PLEASE NOTE: We've tried to make this base as easy to assemble as possible.

In the unlikely event you have problems putting it together or missing pieces, please contact us. Details below.

